



*I have hidden in my soul  
a sliver of the sun*



**The Mary & Richard Solari Center for  
Compassionate Care**  
940 Disc Drive  
Scotts Valley CA 95066 (mailing address)

**The Borina Family Center for  
Compassionate Care**  
65 Nielson Street, Suite 121  
Watsonville CA 95076

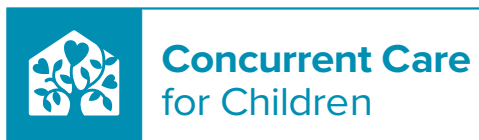
**Phone: (831) 430-3000**  
**Fax: (831) 460-6386**  
**Email: [concurrentcare@hospicesantacruz.org](mailto:concurrentcare@hospicesantacruz.org)**

**[hospicesantacruz.org](http://hospicesantacruz.org)**

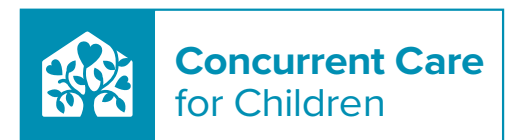
## **Concurrent Care for Children** Program Overview

Comfort care for children with life-limiting illness.  
Compassionate symptom management and loving  
support for your child and the whole family.

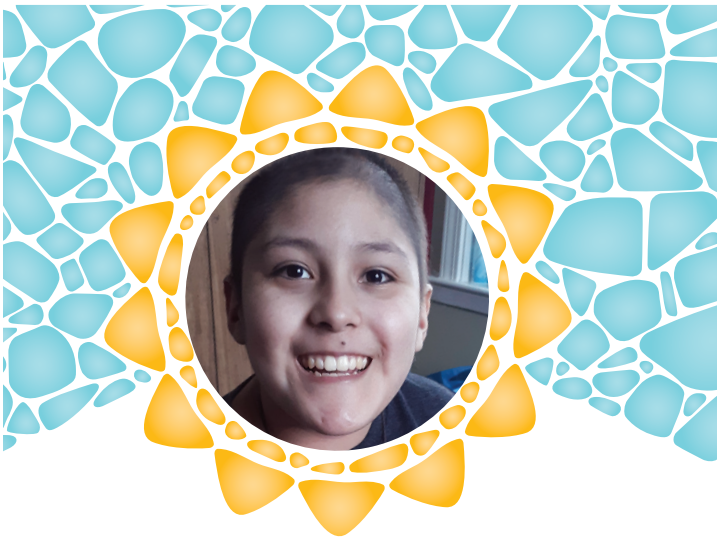
**We are here for you.**



A Program of Hospice of Santa Cruz County



A Program of Hospice of Santa Cruz County



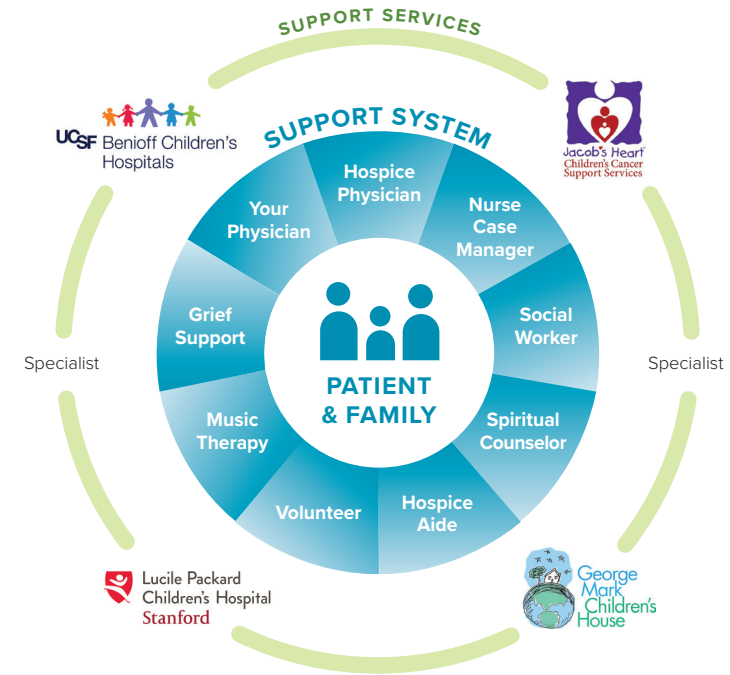
*Our goal is to support you, your child and your family and help make this time as meaningful and positive as possible.*

## Care Team

### CONCURRENT CARE IS FAMILY CENTRIC.

Our professionals work as a team to support your child. The Concurrent Care Team may include a nurse, social worker, aide, spiritual counselor, doctor, volunteer, and music therapist. You and your child are at the center of this team. Our goal is to provide expert care and support to address your child's medical, emotional, and spiritual needs throughout this journey. We honor all cultures, values and beliefs and stand ready to support your child along with you and your family. Your child's needs and your preferences will determine which team members play a role in your child's care, although a nurse and social worker see everyone on concurrent care.

Your Concurrent Care Team members will make periodic visits. They will schedule their visits ahead of time with you. Your child's doctor is still involved in his or her care and may also guide us in decisions about your child's medications and treatments.



## Our Mission

**TO ENHANCE QUALITY OF LIFE** as well as provide expert care, comfort and support for children living with a life-limiting illness. Care is provided in your home where your child can be surrounded by family and the things that are familiar and matter most to them.

## Who We Care For

**CHILDREN AGE 2 TO 21 YEARS OF AGE** with a life-limiting illness such as congenital heart disease, pulmonary conditions, cancer, neuromuscular disorders, neurological or genetic disorders. Children under age two will be considered based on patient and family needs. Our Pediatric Medical Director will work with you and your child's physician(s) to help you explore if your child qualifies for concurrent care.

## What We Offer

- **Pain and symptom management**
- **Durable medical equipment as needed**
- **Physician on-call 24/7**
- **Education on disease progression and decision-making**
- **Therapies such as Music, Massage, and Pet companions**
- **Care coordination and additional services to support the whole child model**
- **Emotional and Spiritual Care Counseling**
- **Interpretation Services**
- **Volunteers who can help with errands and light chores**
- **Memory and legacy making**
- **Anticipatory grief and bereavement support for siblings, parents and family**
- **Camp Erin© Santa Cruz – a weekend bereavement camp for children and teens**

## Frequently Asked Questions

### Can my child continue to see his/her Pediatrician?

Yes; we will work directly with your child's current physicians and you may elect to continue curative treatment and therapies with other physicians.

### Is this program only for children who have cancer?

No; we will accept any child with a life-limiting diagnosis who is deemed eligible by our Pediatric Medical Director and your child's physician (Pediatrician or Specialist).

### Does choosing Concurrent Care for Children mean we are giving up hope?

No; certainly not. By choosing Concurrent Care you are creating an opportunity to focus on quality of life as you define it.

### Who pays for Concurrent Care?

In most cases, private insurance or Medi-Cal cover the costs of concurrent care. Donations from our generous community also mean that we can accept all eligible patients regardless of their ability to pay.